

ABBYY® FineReader 11

System Administrator's Guide

Information in this document is subject to change without notice and does not bear any commitment on the part of ABBYY.

The software described in this document is supplied under a license agreement. The software may only be used or copied in strict accordance with the terms of the agreement. No part of this document may be reproduced or transmitted in any form or by any means, electronic or other, for any purpose, without the express written permission of ABBYY.

© ABBYY Production LLC, 2013. All rights reserved.

ABBYY, the ABBYY logo, ABBYY FineReader, ADRT are either registered trademarks or trademarks of ABBYY Software Ltd.

© 1984–2008 Adobe Systems Incorporated and its licensors. All rights reserved.

Protected by U.S. Patents 5,929,866; 5,943,063; 6,289,364; 6,563,502; 6,185,684; 6,205,549; 6,639,593; 7,213,269; 7,246,748; 7,272,628; 7,278,168; 7,343,551; 7,395,503; 7,389,200; 7,406,599; 6,754,382; Other Patents Pending.

Adobe® PDF Library is licensed from Adobe Systems Incorporated.

Adobe, Acrobat®, the Adobe logo, the Acrobat logo, the Adobe PDF logo and Adobe PDF Library are either registered trademarks or trademarks of Adobe Systems Incorporated in the United States and/or other countries.

© 1996–2007 LizardTech, Inc. All rights reserved. DjVu® is protected by U.S. Patent No. 6,058,214. Foreign Patents Pending.

© 2008 Celartem, Inc. All rights reserved.

© 2011 Caminova, Inc. All rights reserved.

Powered by AT&T Labs Technology.

© 2011 University of New South Wales. All rights reserved.

Fonts Newton, Pragmatica, Courier © 2001 ParaType, Inc.

Font OCR–v–GOST © 2003 ParaType, Inc.

© 2002–2008 Intel Corporation.

© 2010 Microsoft Corporation. All rights reserved.

Microsoft, Outlook, Excel, PowerPoint, Windows Vista, Windows are either registered trademarks or trademarks of Microsoft Corporation in the United States and/or other countries.

© 1991–2008 Unicode, Inc. All rights reserved.

© 2010, Oracle and/or its affiliates. All rights reserved

OpenOffice.org, OpenOffice.org logo are trademarks or registered trademarks of Oracle and/or its affiliates.

JasPer License Version 2.0:

© 2001–2006 Michael David Adams

© 1999–2000 Image Power, Inc.

© 1999–2000 The University of British Columbia

© 1996–2011, Amazon.com, Inc. or its affiliates. All rights reserved.

EPUB® is a registered trademark of the IDPF (International Digital Publishing Forum)

iPad® is a trademark of Apple Inc., registered in the U.S. and other countries.

All other trademarks are the sole property of their respective owners.

Table of Contents

INSTALLING ABBYY FINEREADER 11 ON WORKSTATIONS	3
Interactive installation	3
Command line installation	4
Using Active Directory	5
Using Microsoft System Center Configuration Manager (SCCM)	10
ACTIVATING ABBYY FINEREADER 11	15
Why is activation necessary?	15
Activating the product	15
Activation methods	15
Automatic activation	16
Renewing a license	16
FREQUENTLY ASKED QUESTIONS	17
Can I clone an operating system with pre-installed ABBYY FineReader 11?	17
How can I repair ABBYY FineReader 11 on workstations?	17
How can I delete an expired license from a workstation?	17
TECHNICAL SUPPORT	18

Installing ABBYY FineReader 11 on Workstations

You can install ABBYY FineReader 11 either directly from the CD-ROM or from a network share (in the latter case, you must copy the entire distribution package onto the file server).

You can use one of the following methods to install ABBYY FineReader 11 on the workstations:

- manually in interactive mode
- via the command line
- Active Directory
- Microsoft System Center Configuration Manager (SCCM)

Workstation requirements

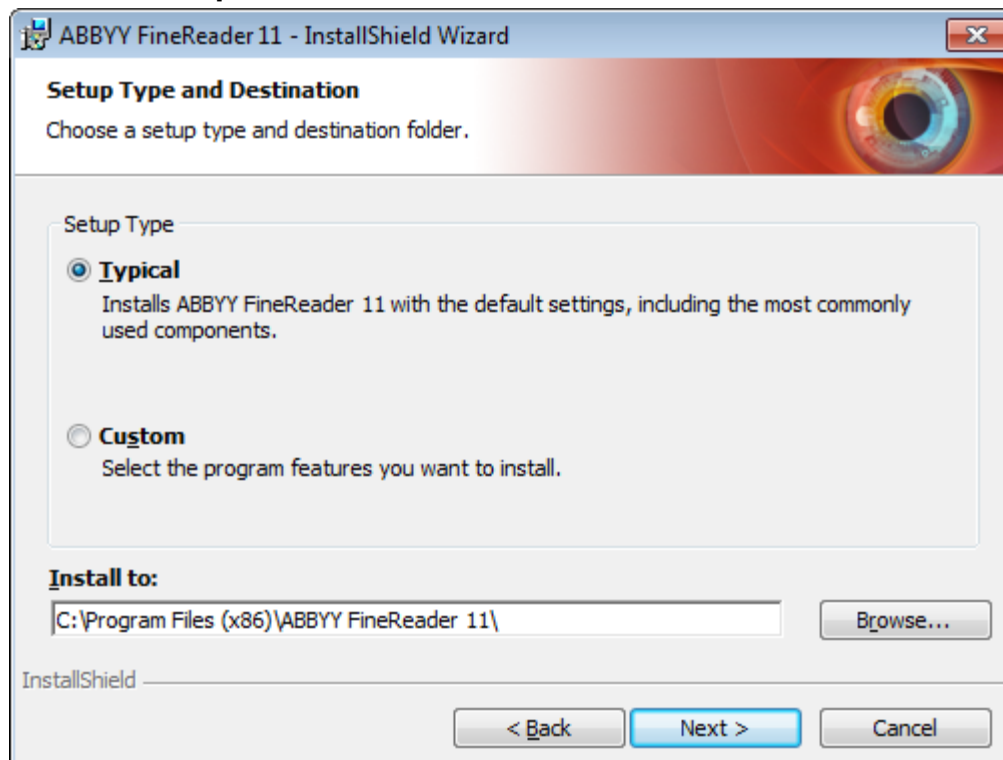
1. 1-GHz or faster 32-bit (x86) or 64-bit (x64) CPU
2. Operating System: Microsoft Windows XP, Microsoft Windows Server 2003, Microsoft Windows Vista, Microsoft Windows 7, Microsoft Windows Server 2008 or Microsoft Windows Server 2008 R2 (to work with localized interfaces, the operating system must support the corresponding language)
3. Memory: 1024 MB RAM; in multiprocessor systems, an additional 512 MB of RAM is required for each additional processor
4. 700 MB for installation of all program components; 700 MB for program operation
5. Video card and monitor (min. resolution 1024×768)
6. Keyboard, mouse or other pointing device

Note: To be able to open PDF files or images from Microsoft Word, Microsoft Excel, and Microsoft Outlook documents, you need to have the corresponding Microsoft Office application installed on your system.

Important! You cannot install different editions of ABBYY FineReader on the same workstation.

Interactive installation

1. Run the **setup.exe** file in the folder that contains the distribution files.



2. Follow the instructions of the setup wizard.

Command line installation

Run the **setup.exe** file in the folder that contains the distribution files, using the parameters described below:

Advertise installation

For advertise installation, type

Setup.exe /j

The program icon will appear in the workstation's **Start** menu. Clicking this icon automatically installs the program in default configuration (the interface language is selected automatically based on the regional settings of the computer).

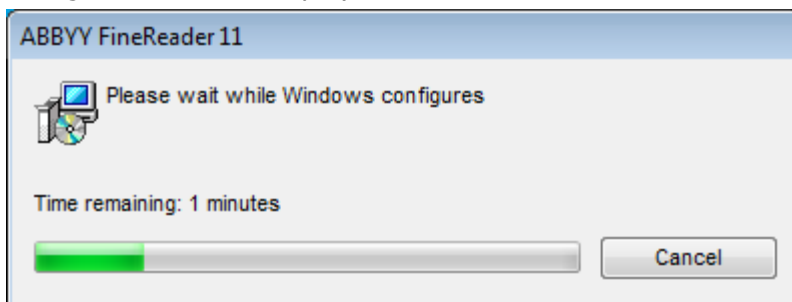
Silent installation

For silent installation, type

Setup.exe /qn

In the case of silent installation, no set-up dialog boxes are displayed and the program is installed in default configuration (the interface language is selected automatically based on the regional settings of the computer).

Note: Change **"/qn"** to **"/qb"** if you want an installation progress bar to be displayed. No other dialog boxes will be displayed.



Additional command-line options for silent installation

/L<language code> disables automatic selection of the interface language and installs ABBYY FineReader with the interface language specified in the command line.

Possible **language code*** values:

- 1026 Bulgarian
- 1028 Chinese (Traditional)
- 1029 Czech
- 1030 Danish
- 1031 German
- 1032 Greek
- 1033 English
- 1034 Spanish
- 1036 French
- 1038 Hungarian
- 1040 Italian
- 1041 Japanese
- 1042 Korean
- 1043 Dutch
- 1045 Polish
- 1046 Portuguese (Brazilian)

1049 Russian
1051 Slovak
1053 Swedish
1055 Turkish
1058 Ukrainian
1061 Estonian
2052 Chinese (Simplified)

*The number of available interface languages depends on the type of your distribution package.

/V"<command line>" passes the specified command line directly to **msiexec.exe**. Instead of the words "command line" you can specify the following:

INSTALLDIR="<destination path>" specifies the path to the folder where ABBYY FineReader 11 will be installed.

WEB_ALLOWED=<Yes or No> allows or prohibits sending information about the selected ABBYY FineReader settings to ABBYY over the Internet.

E.g.:

Setup.exe /qn /L1049 /v INSTALLDIR="C:\ABBYY FineReader 11" WEB_ALLOWED=Yes

This will install ABBYY FineReader 11 into C:\ABBYY FineReader 11. The menus, dialog boxes and other interface elements will be in Russian. Information about the selected ABBYY FineReader settings will be sent to ABBYY over the Internet. The set of available OCR languages depends on the type of the distribution package.

Using Active Directory

Microsoft Windows 2003 Server and Microsoft Windows 2008 Server include an integrated directory service, **Active Directory**, which, in turn, includes **Group Policy**. The Software Installation snap-in, which is part of Group Policy, allows you to install a software application on several workstations simultaneously.

Three major installation methods are implemented in **Active Directory**:

- Publish to User
- Assign to User
- Assign to Computer

ABBYY FineReader 11 can be installed using the **Assign to Computer** method.

Important!

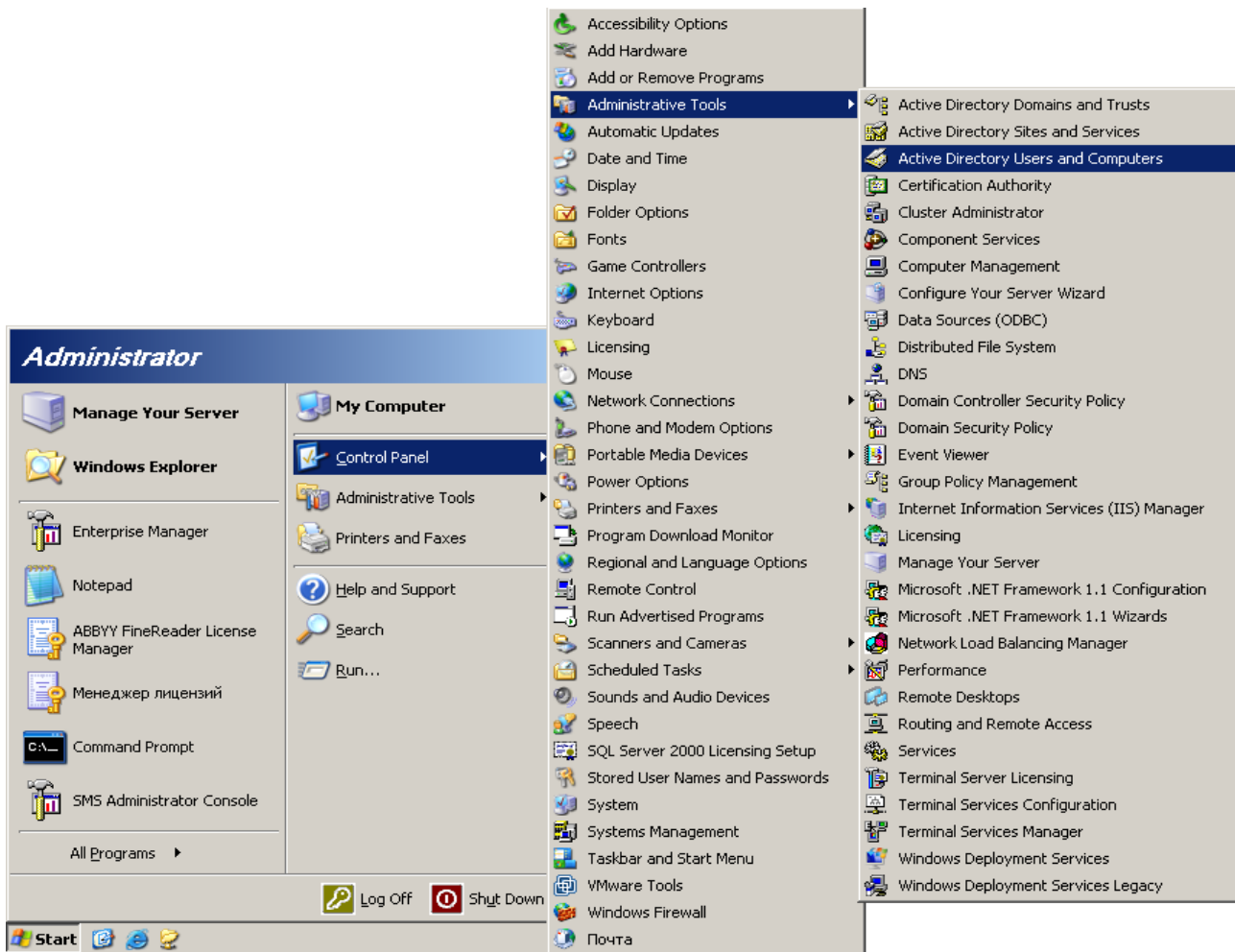
- ABBYY FineReader 11 will be completely installed on a workstation only after the workstation is restarted.
- The **Publish to User** and **Assign to User** methods are not supported.
- ABBYY FineReader requires Microsoft Core XML Services (MSXML) 6.0 to be installed on the workstation.

Example: Using Active Directory to deploy ABBYY FineReader 11

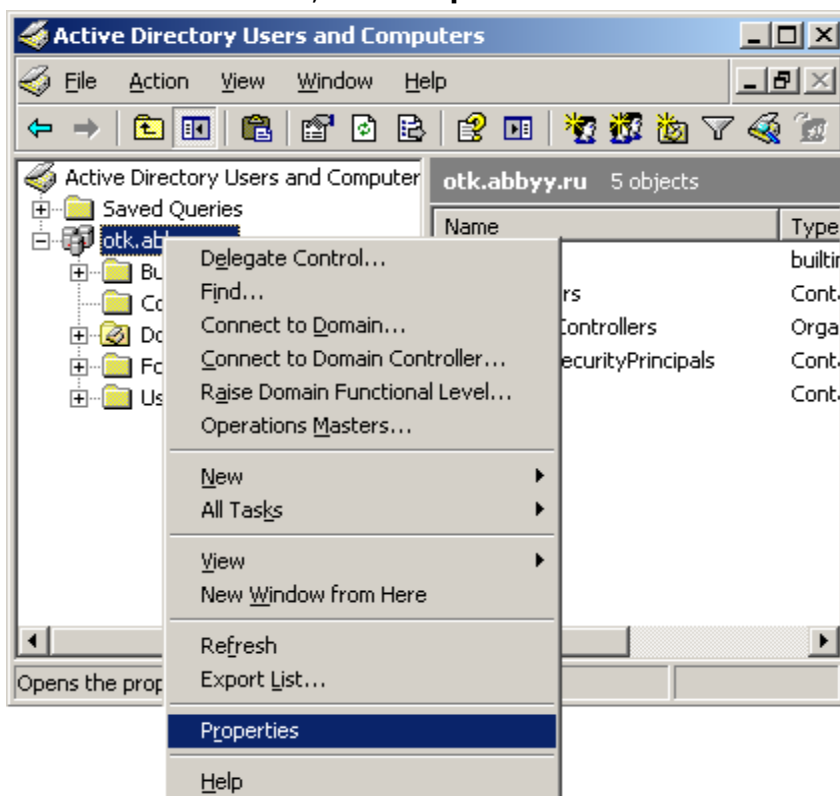
This example illustrates deployment under Microsoft Windows Server 2003 with Microsoft Group Management Console installed.

The program is installed on one domain computer or on a group of computers:

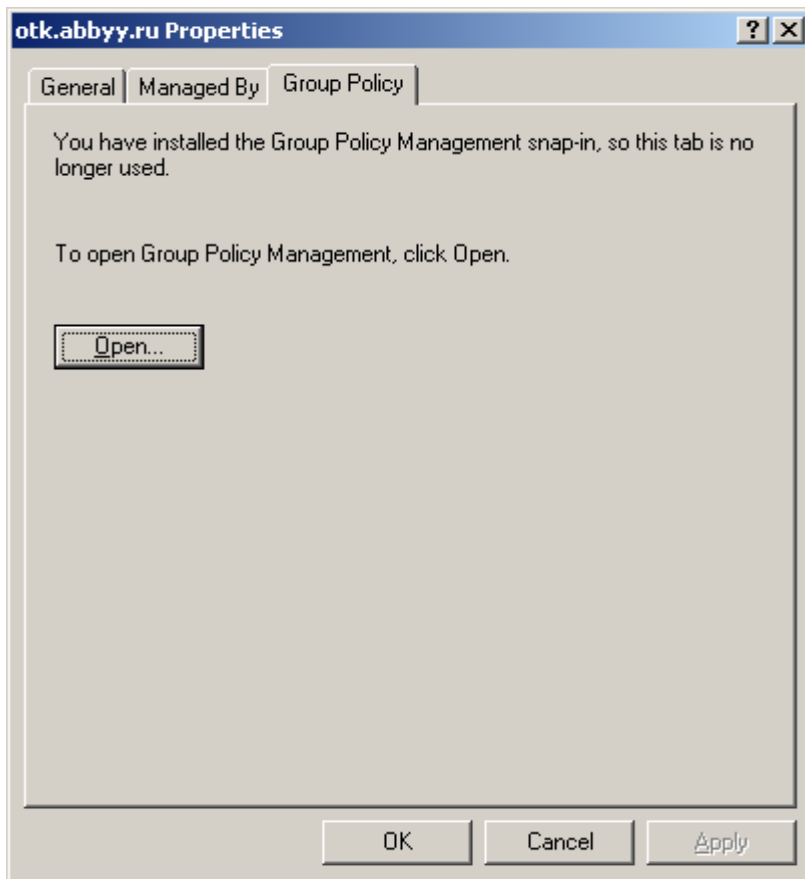
1. Copy the ABBYY FineReader 11 distribution onto the server.
2. Go to **Start>Control Panel>Administrative Tools** and select **Active Directory Users and Computers**.



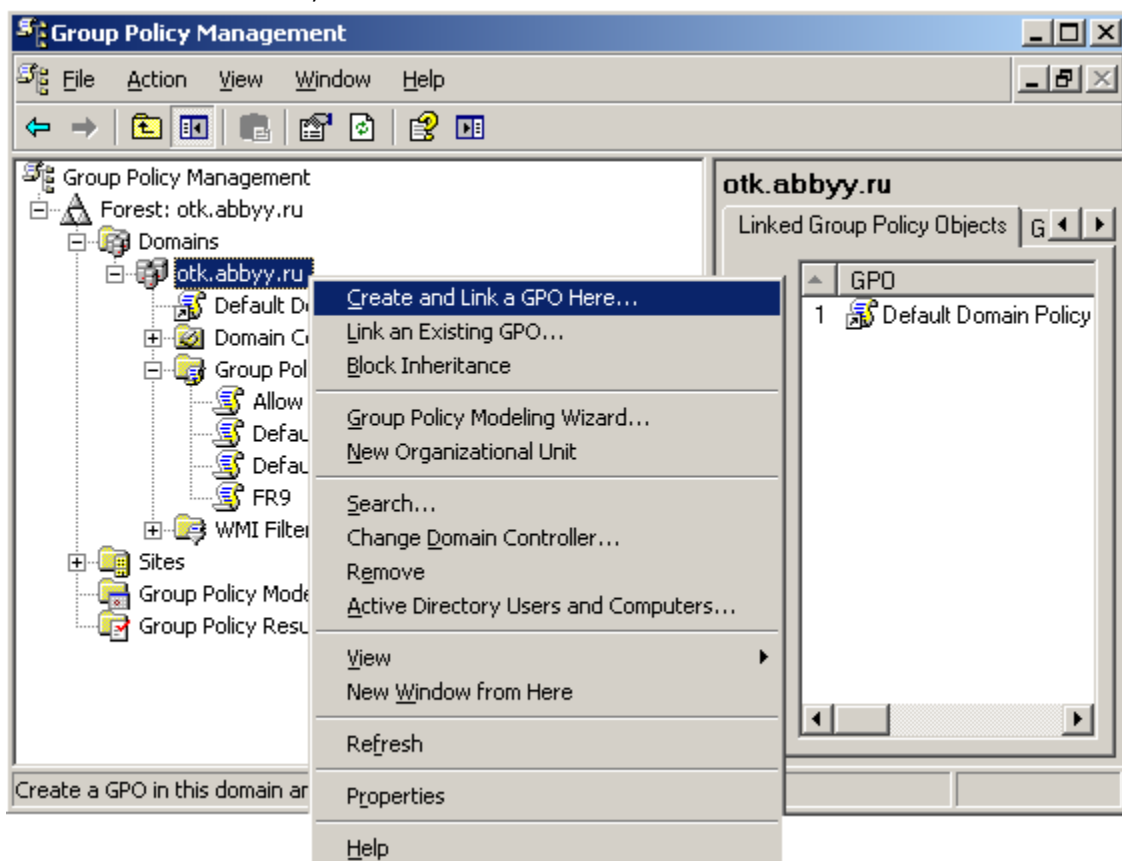
3. Right-click the site, domain, or another organized unit that contains the computer or group of computers onto which ABBYY FineReader 11 is to be installed.
4. On the shortcut menu, select **Properties**.



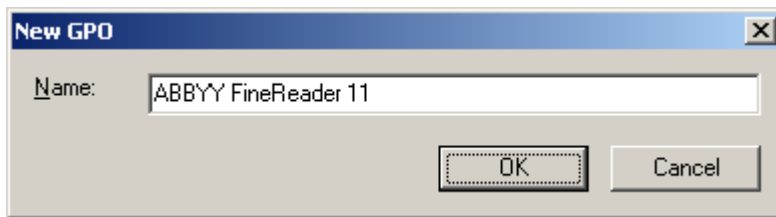
5. In the **Properties** dialog box, click the **Group Policy** tab and then click **Open...**



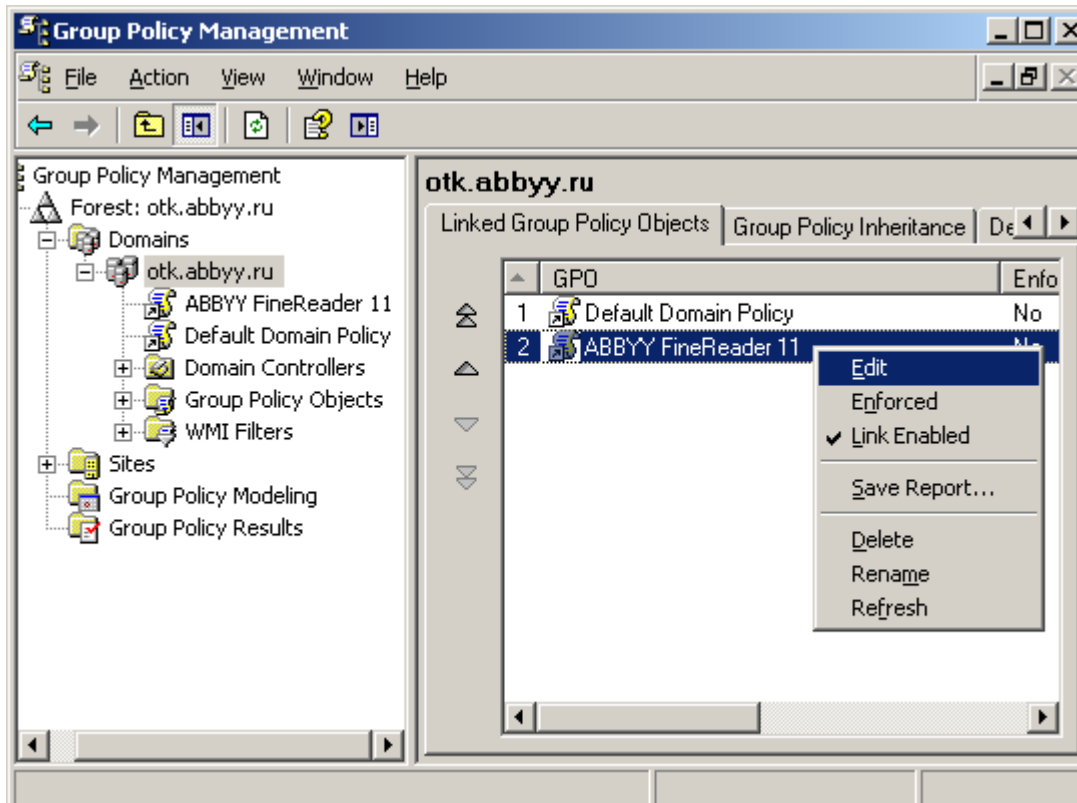
6. Right-click the organized unit that contains the computer or group of computers onto which ABBYY FineReader 11 is to be installed.
7. On the shortcut menu, select **Create and Link a GPO Here...**



8. Enter a descriptive name and click **OK**.

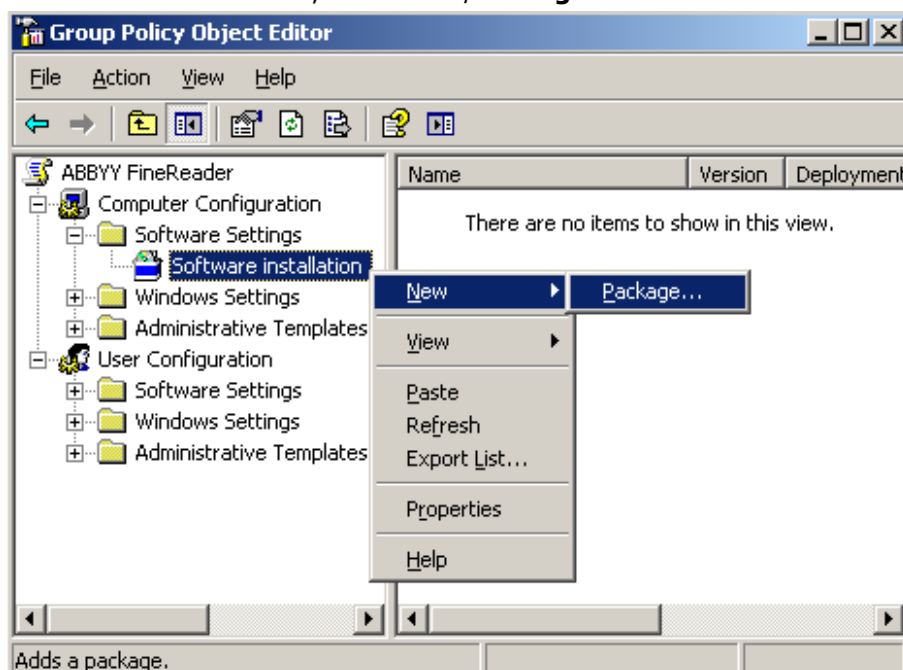


9. Right-click the Group Policy object you have created and select **Edit**.

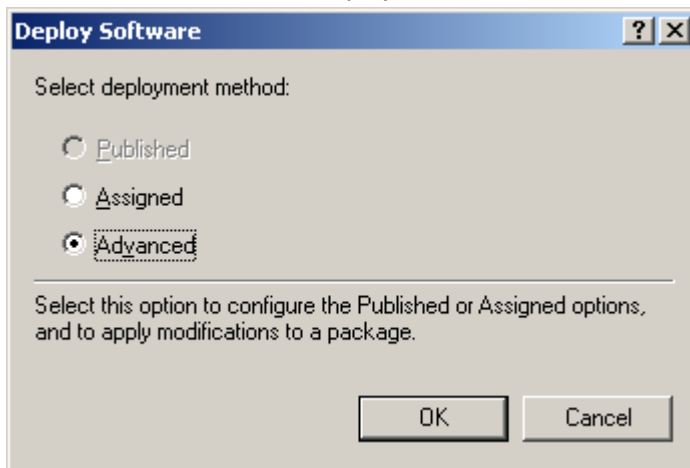


10. In the **Group Policy Object Editor** window, click **Computer Configuration>Software Settings>Software Installation**.

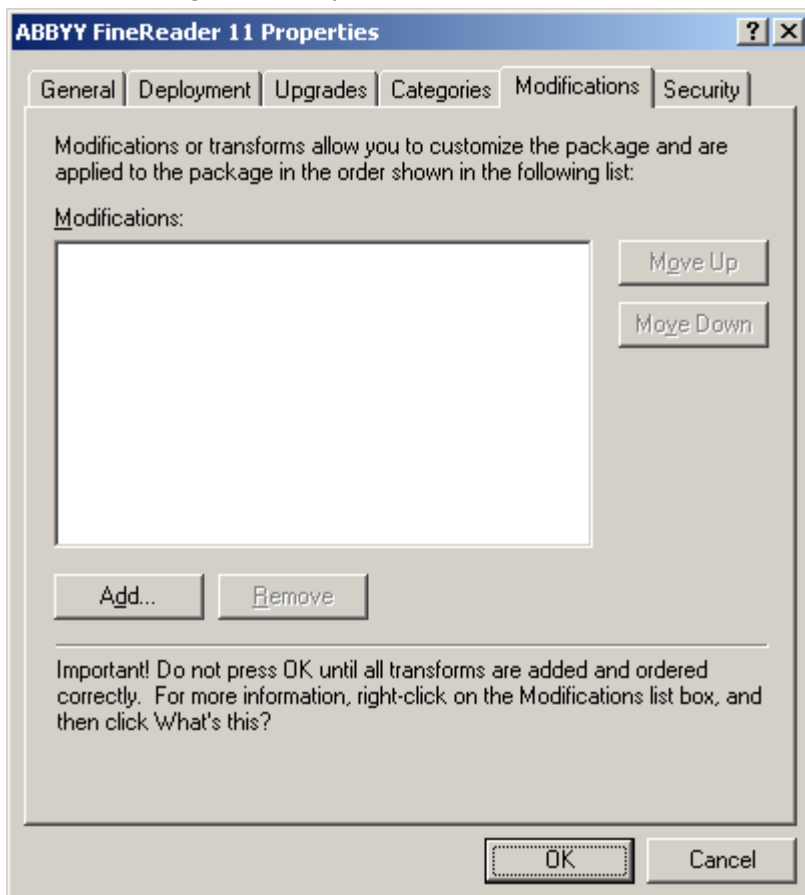
11. On the shortcut menu, select **New/Package...**



12. Specify the network path to the file **ABBYY FineReader 11.msi**.
This file is located in the ABBYY FineReader distribution on the server.
13. Select the **Advanced** deployment method.



14. In the dialog box that opens, click the **Modifications** tab and then click the **Add...** button.



15. Select the interface language that will be used by ABBYY FineReader when installed on the workstations.
The language files are located in the distribution folder on the server.
File names and their languages:
1026.mst Bulgarian
1028.mst Chinese (Traditional)
1029.mst Czech
1030.mst Danish
1031.mst German
1032.mst Greek

1033.mst English
1034.mst Spanish
1036.mst French
1038.mst Hungarian
1040.mst Italian
1041.mst Japanese
1042.mst Korean
1043.mst Dutch
1045.mst Polish
1046.mst Portuguese (Brazilian)
1049.mst Russian
1051.mst Slovak
1053.mst Swedish
1055.mst Turkish
1058.mst Ukrainian
1061.mst Estonian
2052.mst Chinese (Simplified)

E.g.: To install ABBYY FineReader with the Russian interface, select **1049.mst**.

Using Microsoft System Center Configuration Manager (SCCM)

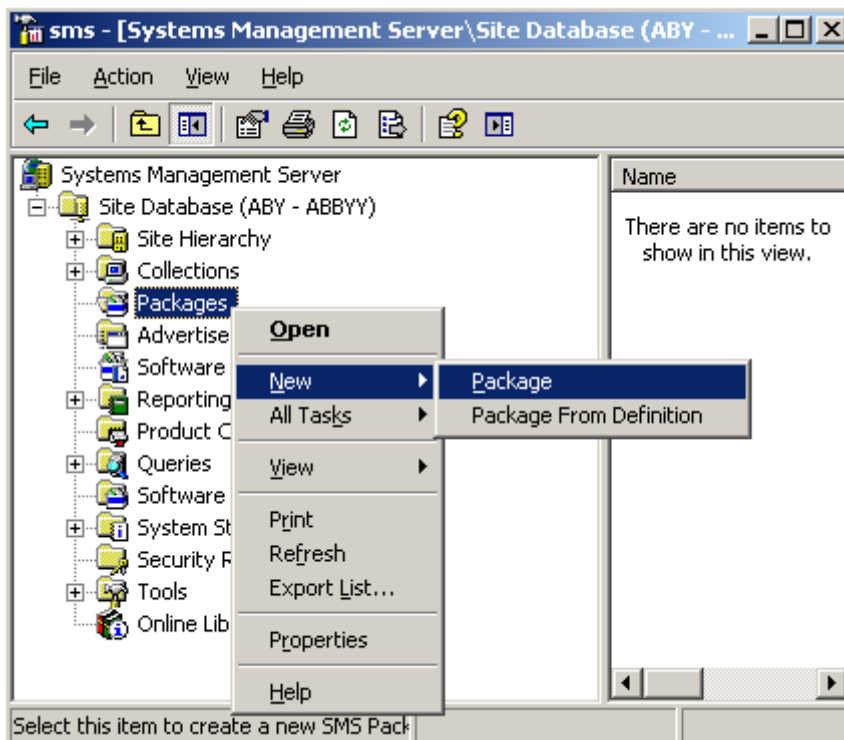
Microsoft System Center Configuration Manager automates software deployment in a local area network and eliminates the need to go directly to the locations where the software is to be installed (computers, groups, or servers).

Software deployment using SCCM comprises three stages:

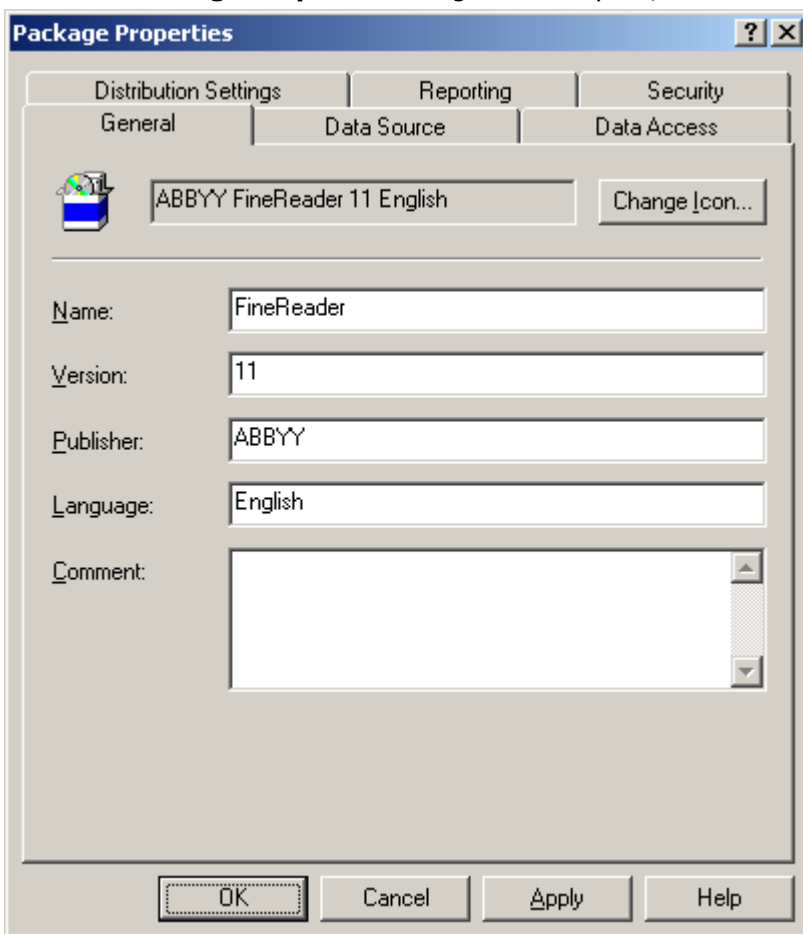
1. Preparing ABBYY FineReader 11 for automated installation (creating so-called "unattended setup").
2. Creating a deployment script, i.e. choosing installation parameters:
 - computer names
 - time of installation
 - conditions for installation
3. Installing the software on the specified computers by SCCM in accordance with the installation parameters specified in the script.

Example: Using SCCM to deploy ABBYY FineReader 11

1. Copy the ABBYY FineReader 11 distribution onto the server.
2. In the SCCM Administrator Console, select the **Packages** item.
3. In the **Action** menu, select **New>Package**.

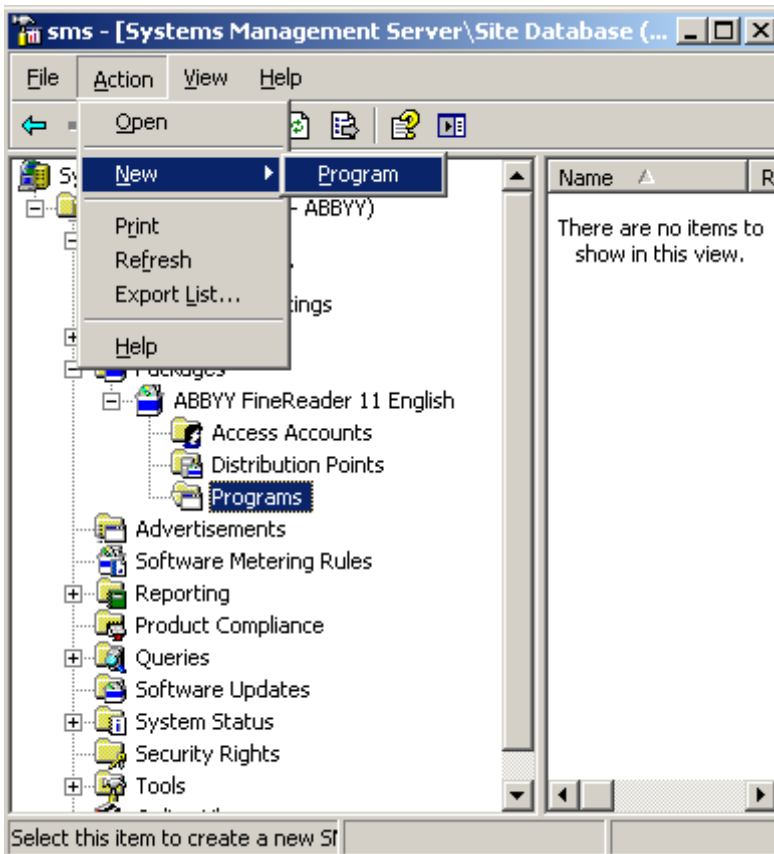


4. In the **Package Properties** dialog box that opens, enter the required package properties.



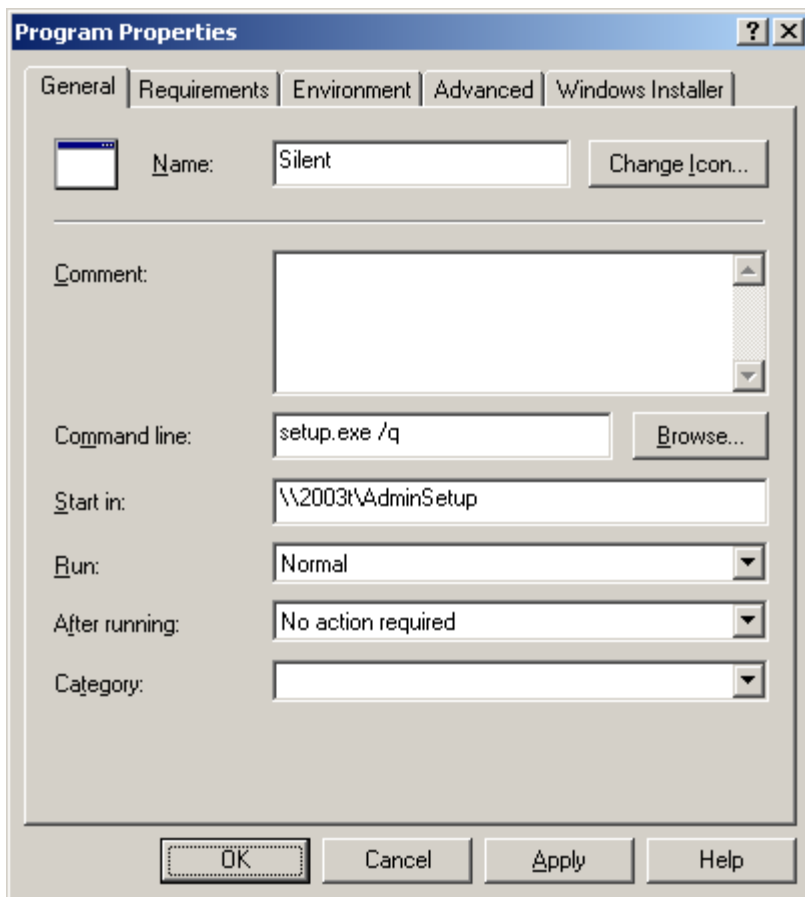
5. Click the **Data Source** tab.
6. Make sure that the **This package contains source files** box is not selected and click **OK**.
7. In the package you have just created, select **Programs**.

8. On the **Action** menu, select **New>Program**.



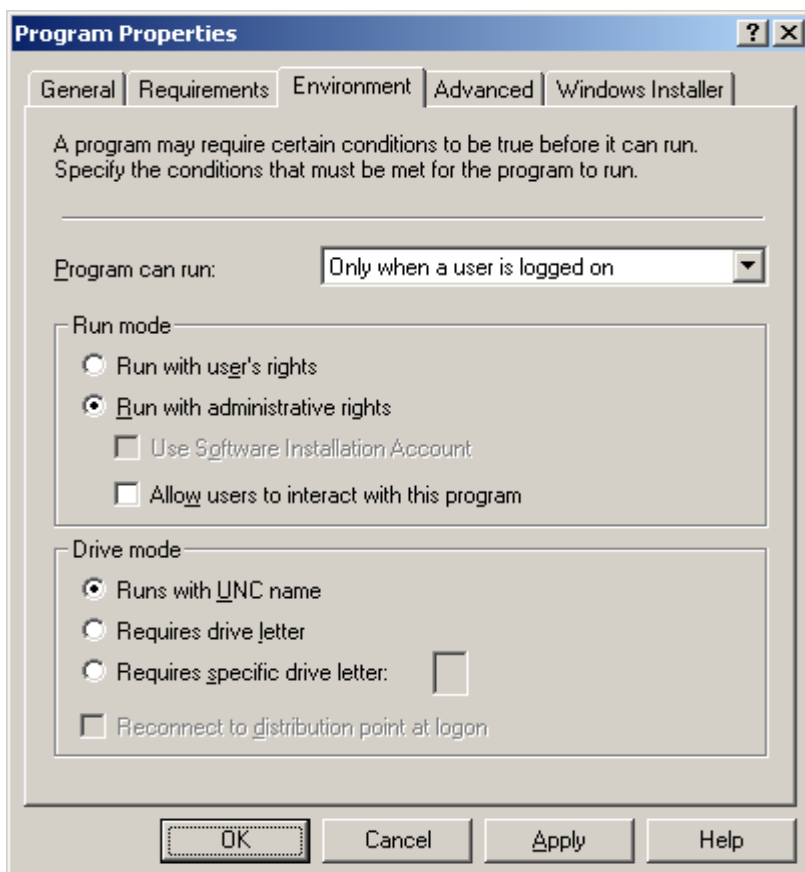
9. On the **General** tab of the **Program Properties** dialog box:

- Enter a descriptive name for the program in the **Name** field
- Type **setup.exe /q** in the **Command Line** field
- In the **Start in** field, provide the network path to the **setup.exe** file in the ABBYY FineReader distribution folder (e.g. **\\MyFileServer\Programs Distributions\ABBYY FineReader 11**).



10. On the **Environment** tab of the **Program Properties** dialog box:

- Select **Run with administrative rights**
- Make sure that **Runs with UNC name** is selected



11. Change the condition in the **Program can run** field if required and click **OK**.
12. You can also use the **Distribute Software Wizard**. To run the wizard, on the **Action** menu, select **All Tasks>Distribute Software** and follow the instructions of the wizard.

Important! You cannot create Distribution Points.

Activating ABBYY FineReader 11

Why is activation necessary?

ABBYY uses software activation technology to prevent unauthorized use of its software products. The technology restricts the number of copies that can run simultaneously and prevents installation of one and the same copy on an unlimited number of workstations. An unactivated copy of ABBYY FineReader will not run or will run in trial mode, depending on your version of the product. In trial mode, certain features may be unavailable, depending on your region and version of the product.

Activating the product

If ABBYY FineReader 11 has not been activated on a given workstation or if its license has expired, when the user attempts to run it, a dialog box is displayed, asking the user to activate a license.

Activation takes just a few minutes. An **Activation Wizard** helps users to send the data required for activation to ABBYY. Once the data are sent, the product is either activated automatically or by entering an **activation code** received from ABBYY (see *Activation Methods* for details).

To activate ABBYY FineReader:

1. Run ABBYY FineReader 11 on the workstation.
2. Click **Activate License...**
Note: If you are running ABBYY FineReader in trial mode, select **Help>Activate ABBYY FineReader...**
3. Follow the instructions of the Activation Wizard.
When activating by phone or by e-mail, you will need to enter the activation code you received from ABBYY or provide the path to the activation file in the corresponding field of the Activation Wizard.

Once the activation process completes, ABBYY FineReader 11 can be used on this workstation in full mode.

Activation methods

The following activation methods are available:

- **Over the Internet (fast, recommended)**

Activation is carried out automatically and takes only seconds to complete. An active Internet connection is required for this method.

- **By e-mail (fast)**

The Activation Wizard will create an activation e-mail message. Send this message to ABBYY without altering its subject or body. You will receive a file in reply. Save this file to your hard disk. In the Activation Wizard, click **Next>**, then click **Browse...** and provide the path to the file.

- **On the website (fast)**

The Activation Wizard will display the URL address where you can activate your copy, the serial number of your copy, and your Product ID. Go to the specified URL and paste your serial number and Product ID into the corresponding fields on the page. A file will be generated. Download this file to your computer. In the Activation Wizard, click **Next>**, then click **Browse...** and provide the path to the file.

- **By e-mail from another computer (slow)**

The Activation Wizard will display the text of an activation e-mail message and the e-mail address to which the message should be sent. On another computer, create an e-mail message, copy the text from the Activation Wizard into this message, and send the message to the address indicated in the Activation Wizard. You will receive a file in reply. Copy this file onto the computer on which ABBYY FineReader 11 is to be activated. In the Activation Wizard, click **Next>**, then click **Browse...** and provide the path to the file.

Important! Do not alter the text of the activation message generated by the Activation Wizard. Make sure the message has no attachments and no automatic signature is inserted at the end of the message.

- **By phone (slow)**

Important! This activation method is not available for some types of distribution packages.

In the Activation Wizard, select your country. The wizard will show the phone numbers of your nearest ABBYY office or partner. Dial one of the numbers and communicate to the operator your serial number and Product ID (both will be displayed in the Activation Wizard). The operator will read an activation to you. In the Activation Wizard, click **Next>** and enter the activation code..

Note: An activation code has 26 digits and will take some time to dictate.

Automatic activation

Some versions of the product automatically activate themselves over the Internet without asking the user for confirmation. This type of activation requires an active Internet connection. If automatic activation fails for some reason, you can either try activating the product once again or select a different activation method.

Renewing a license

If you have a time-limited license, you will not be able to use ABBYY FineReader 11 when the license expires. To continue using the product, you will need to run the Activation Wizard and activate a new serial number.

Frequently Asked Questions

Can I clone an operating system with pre-installed ABBYY FineReader 11?

To deploy ABBYY FineReader 11, you can clone your Microsoft Windows XP/Vista/7 operating system. After cloning your OS, you will need to activate ABBYY FineReader. An unactivated copy of ABBYY FineReader will not run or will run in trial mode, depending on your version of the product. Some versions of the product automatically activate themselves over the Internet without asking the user for confirmation. See *Activating ABBYY FineReader 11* for details.

Important!

1. Cloning is only possible if you have not yet run ABBYY FineReader on the cloned computer. Otherwise, you will need to repair ABBYY FineReader on that computer. See *How can I repair ABBYY FineReader 11 on workstations?*
2. Once you have cloned your OS, you need to change its name and **Security Identifier (SID)**.
3. Trial versions of ABBYY FineReader 11 cannot be cloned.

How can I repair ABBYY FineReader 11 on workstations?

Repairing ABBYY FineReader 11 in interactive mode

On the workstation, do the following:

1. In **Start>Control Panel**, select **Add and Remove Programs**.
Note: In Microsoft Windows Vista and Microsoft Windows 7, this command is called **Programs and Features**.
2. In the list of installed programs, select **ABBYY FineReader 11** and click **Change**.
3. In the **Program Maintenance** dialog box that opens, select **Repair** and click **Next**.
4. Follow the instructions of the wizard.

How can I delete an expired license from a workstation?

1. Run ABBYY FineReader.
2. Select **Help>About...** and click **License Info**.
3. Select the license you wish to delete and click **Delete**.

Note: If you cannot start ABBYY FineReader 11 via **Start>Programs**, start **FineReader.exe** from the command line adding the **-license** command.

Technical Support

If you have any questions about how to install and use ABBYY FineReader 11 to which you cannot find answers in this System Administrator's Guide, please contact the ABBYY technical support service or ABBYY partners. For contact information, please refer to the "Support" section at **www.abbyy.com**.